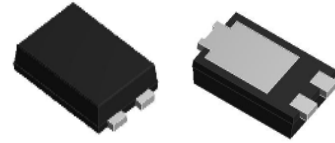
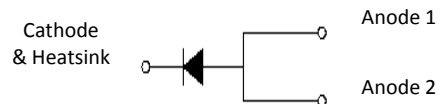


Features

- Heatsink design
- Schottky barrier diodes
- Low leakage current
- Solder dip 260 °C, 10 s
- Low forward voltage drop
- Low profile - typical height of 1.1 mm
- Moisture sensitivity: level 1, per J-STD-020
- High temperature soldering guaranteed: 260°C/10 seconds



eSGC (TO-277)



Typical Applications

For low voltage high frequency inverters, DC/DC converters and polarity protection application.

Maximum Ratings (TA = 25 °C unless otherwise noted)									
Parameter	Symbol	SGC0320S	SGC0330S	SGC0340S	SGC0345S	SGC0350S	SGC0360S	SGC0365S	Unit
Maximum repetitive peak reverse voltage	VRRM	20	30	40	45	50	60	65	V
Maximum RMS voltage	VRMS	14	21	28	31.5	35	42	45.5	V
Maximum DC blocking voltage	VDC	20	30	40	45	50	60	65	V
Maximum average forward rectified current	IF(AV) ¹⁾	3.0							A
Peak forward surge current 8.3 ms single half sine-wave superimposed on rated load	IFSM	100							A
Operating junction and storage temperature range	TJ, TSTG	-55 to +150							°C

Electrical Characteristics (TA = 25 °C unless otherwise noted)						
Parameter	Test Conditions		Symbol	SGC0320S thru SGC0345S	SGC0350S thru SGC0365S	Unit
Maximum instantaneous forward voltage	IF=3A	TA=25°C	VF	0.50	0.70	Volts
Maximum DC reverse current at rated DC blocking voltage	Rated VR	TA=25°C	IR	0.3		mA
		TA=125°C		50		
Typical junction	4.0 V, 1 MHz		CJ	230	160	pF
Typical thermal resistance	junction to lead pad		RθJL ¹⁾	20		°C/W

Note 1) Thermal resistance RθJL is junction to lead, mounted on P.C.B with 30*30mm copper pad area

Ratings and Characteristics Curves

(TA = 25°C unless otherwise noted)

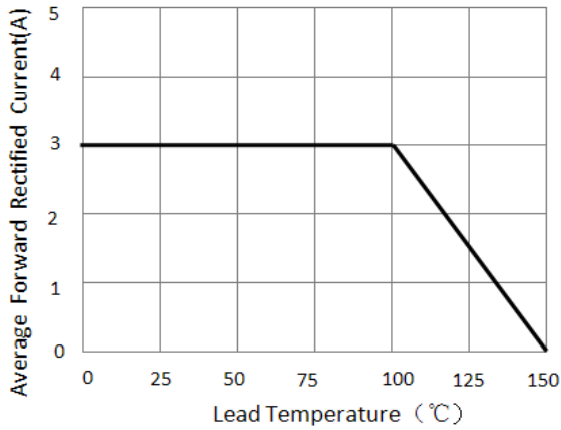


Figure 1. Forward Current Derating Curve

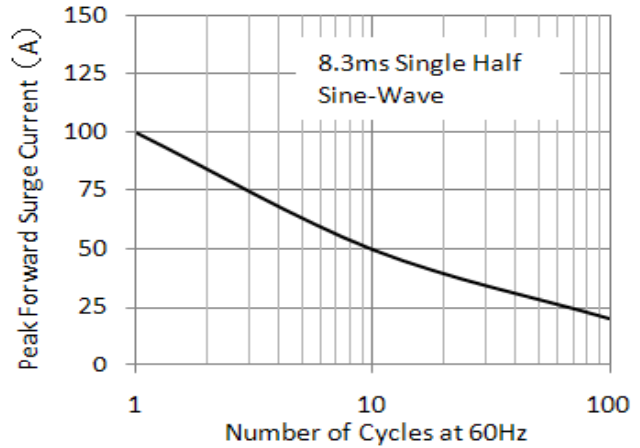


Figure 2. Maximum Non-Repetitive Peak Forward Surge Current

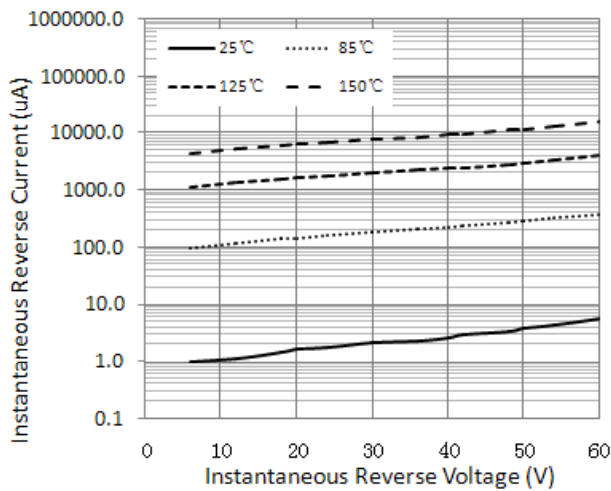


Figure 3. Typical Reverse Characteristics

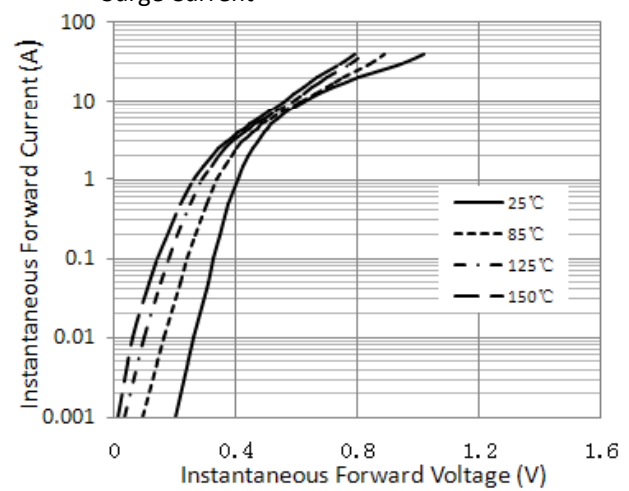


Figure 4. Typical Instantaneous Forward Characteristics (SGC0320S thru SGC0345S)

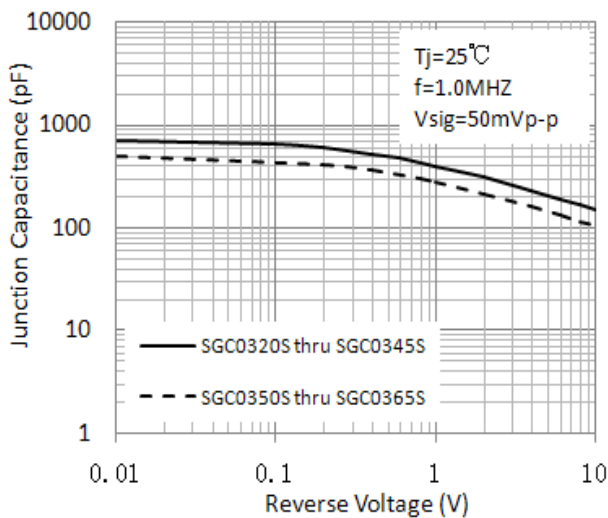


Figure 5. Typical Junction Capacitance

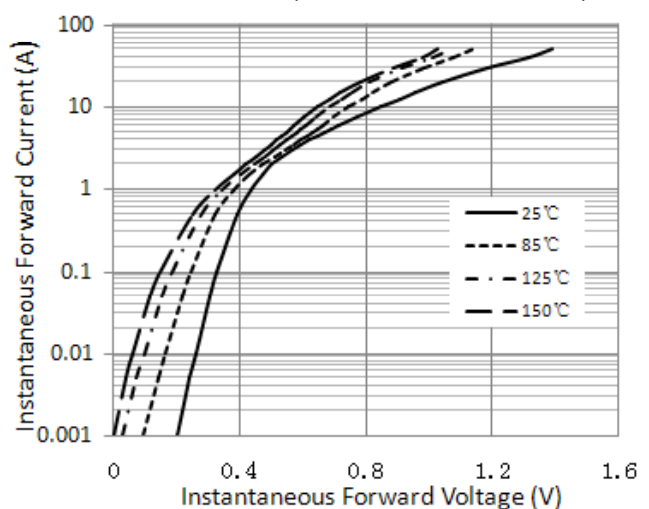
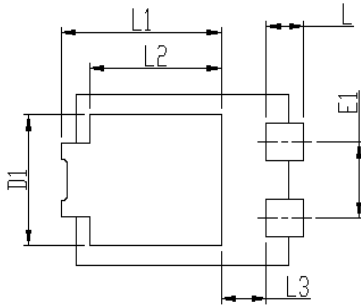
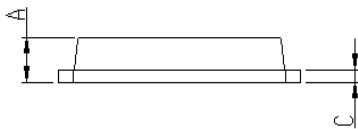
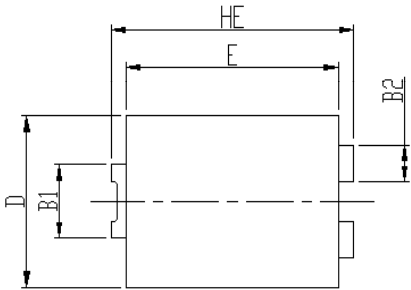


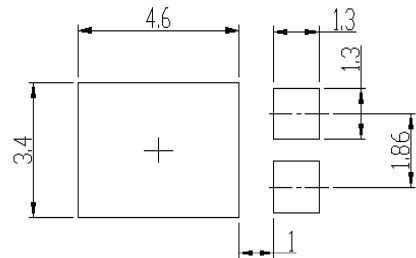
Figure 6. Typical Instantaneous Forward Characteristics (SGC0350S thru SGC0365S)

Package Outline Dimensions



DIM	Unit: mm		Unit: inch	
	MIN	MAX	MIN	MAX
HE	6.4	6.6	0.252	0.260
E	5.6	5.8	0.220	0.228
D	4.1	4.3	0.161	0.169
B1	1.7	1.9	0.067	0.075
B2	0.8	1	0.031	0.039
A	1.05	1.2	0.041	0.047
C	0.3	0.4	0.012	0.016
L	0.85	1.1	0.033	0.043
L1	4.2	4.4	0.165	0.173
L2	3.52 Typ.		0.139 Typ.	
L3	1.1	1.4	0.043	0.055
D1	3	3.3	0.118	0.130
E1	1.86 Typ.		0.073 Typ.	

Soldering footprint

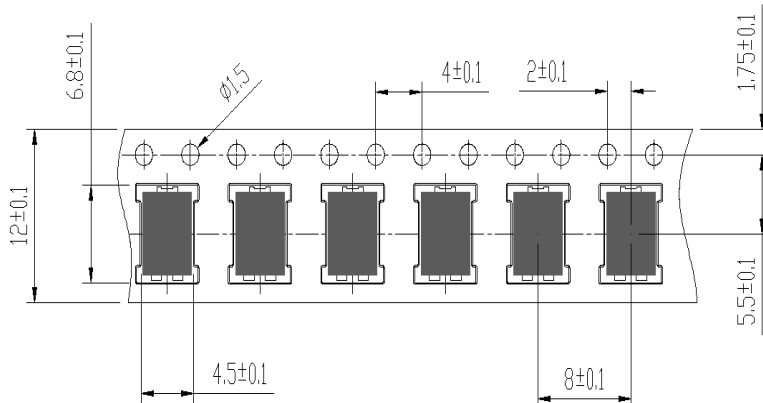


Packing Information

Packing quantities:

5000 pcs/Reel, 12mm Tape, 13" Reel

Tape & Reel Specification





Disclaimers

These materials are intended as a reference to assist our customers in the selection of the Suzhou Good-Ark product best suited to the customer's application; they do not convey any license under any intellectual property rights, or any other rights, belonging to Suzhou Good-Ark Electronics Co., Ltd. or a third party.

Suzhou Good-Ark Electronics Co., Ltd. assumes no responsibility for any damage, or infringement of any third-party's rights, originating in the use of any product data, diagrams, charts, programs, algorithms, or circuit application examples contained in these materials.

All information contained in these materials, including product data, diagrams, charts, programs and algorithms represents information on products at the time of publication of these materials, and are subject to change by Suzhou Good-Ark Electronics Co., Ltd. without notice due to product improvements or other reasons. It is therefore recommended that customers contact Suzhou Good-Ark Electronics Co., Ltd. or an authorized Suzhou Good-Ark Electronics Co., Ltd. for the latest product information before purchasing a product listed herein. The information described here may contain technical inaccuracies or typographical errors. Suzhou Good-Ark Electronics Co., Ltd. assumes no responsibility for any damage, liability, or other loss rising from these inaccuracies or errors. Please also pay attention to information published by Suzhou Good-Ark Electronics Co., Ltd. by various means, including our website home page.
(<http://www.goodark.com>)

When using any or all of the information contained in these materials, including product data, diagrams, charts, programs, and algorithms, Please be sure to evaluate all information as a total system before making a final decision on the applicability of the information and products. Suzhou Good-Ark Electronics Co., Ltd. assumes no responsibility for any damage, liability or other loss resulting from the information contained herein.

The prior written approval of Suzhou Good-Ark Electronics Co., Ltd. is necessary to reprint or reproduce in whole or in part these materials.

Please contact Suzhou Good-Ark Electronics Co., Ltd. or an authorized distributor for further details on these materials or the products contained herein.